

A New Way to Live

SEED Homes is revolutionizing the way people live. Using industrial-strength construction, environmentally-friendly materials, and homes that fold and can be shipped anywhere.



Robust Industrial Construction

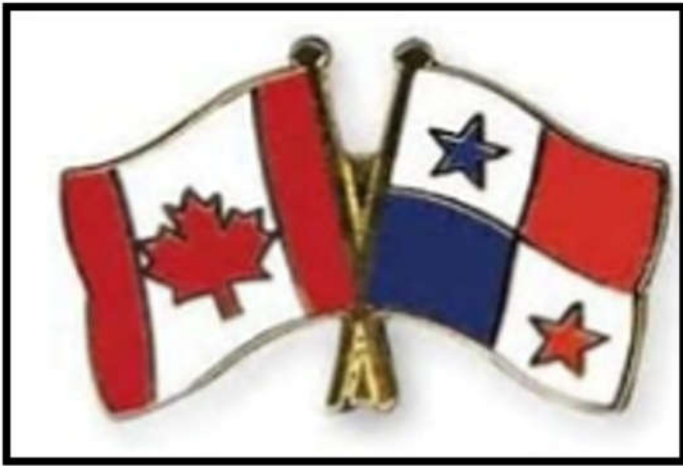
- Steel Construction
- Carbon-negative materials
- Renewable materials

Leak proof insulated roofing panels



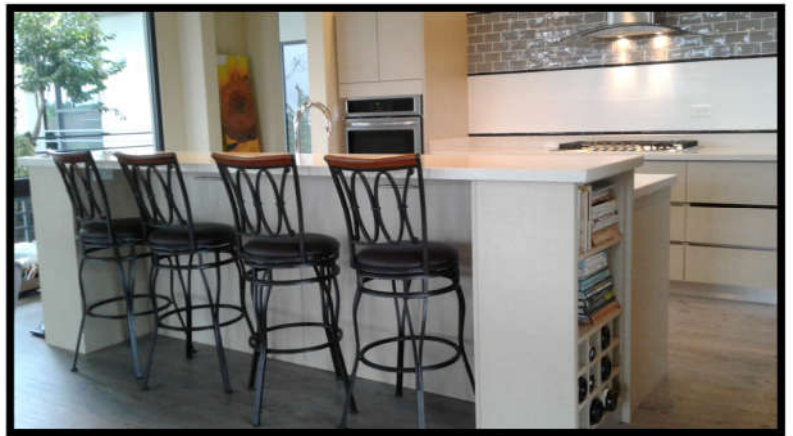
Extreme Conditions Durability

- Hurricane Winds
- Near zero exterior maintenance
- 20-year exterior finish warranty
- Snow loads / Hail resistant
- (not needed in Panama)



Canada—Panama free trade agreement saves tens of thousands in taxes

All structural elements are completely mold-proof.
(Very important in Panama!)



Off Grid Design Options

- Solar Power
- Seed water gathering system
- Lay your roots down anywhere

Total Customizable interiors, ready within 1 month of arrival and comes with a 5 year warranty!



SEED HOMES PANAMA

NOOK Model

- Description:
 - 730 sq. ft. (68m²)
 - 2 bedroom
 - Large master bedroom
 - 2nd bedroom
 - Full washroom
 - Full kitchen
 - Laundry / Pantry room
 - Full appliance package (see description below)
- Includes:
 - Building structure and roof panels
 - Spray insulated exterior walls
 - Exterior doors and windows
 - Interior wall finishes
 - Trusscore Panels
 - Interior partition walls package
 - Electrical wiring & outlets
 - Interior LED Lighting package
 - Plumbing rough-in
 - Interior doors
 - Interiors Cabinets
 - Kitchen
 - Pantry cabinets
 - Washroom vanities
 - Closets
 - Quartz Countertops (2cm edge & 100mm backsplash)
 - Vinyl plank flooring (flooring only, no base board)
 - Fixture list:
 - Glass shower enclosure
 - Toilet
 - Kitchen sink (SS single)
 - Washroom sink
 - Kitchen faucet
 - Washroom vanity faucet
 - Washroom fixtures:
 - Towel rack



- Face cloth ring
- Towel hooks (2)
- Toilet paper holder
- Mirror
- Plumbing fixture installation and hook-up
- Electrical fixture install and hook-up
- Appliances (included in the pricing above)
 - Free standing oven and range (\$ 450.00)
 - Microwave extractor (\$ 430.00)
 - Dishwasher (\$ 417.00)
 - Fridge (\$1135.00)
 - Stacking washer / dryer (\$1230.00)
- Construction Management:
 - Order coordination
 - Interior layout and design
 - Shipping coordination from Canada
 - Shipping coordination from Panama Port to jobsite
 - Crane coordination
 - Plumbing and electrical trade management
 - Finish package management
 - Appliance coordination and installation

○ **NOT INCLUDED:**

- Taxes
- Building permit
- Shipping costs
 - Between \$30,000 to \$50,000.00
 - This needs to be confirmed at the time of shipping
 - Shipping estimates include:
 - Pick up from factory
 - Sea freight shipping to Panama
 - port fees and export documentation
- Foundation piles
- Site preparation
- Crane costs

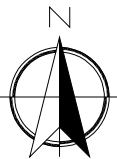


PROJECT:
SEED HOMES PANAMA
HOME MODEL - NOOK

DRAWING: FLOOR PLAN
SCALE: NTS
DIMENSION SCALE: IMPERIAL

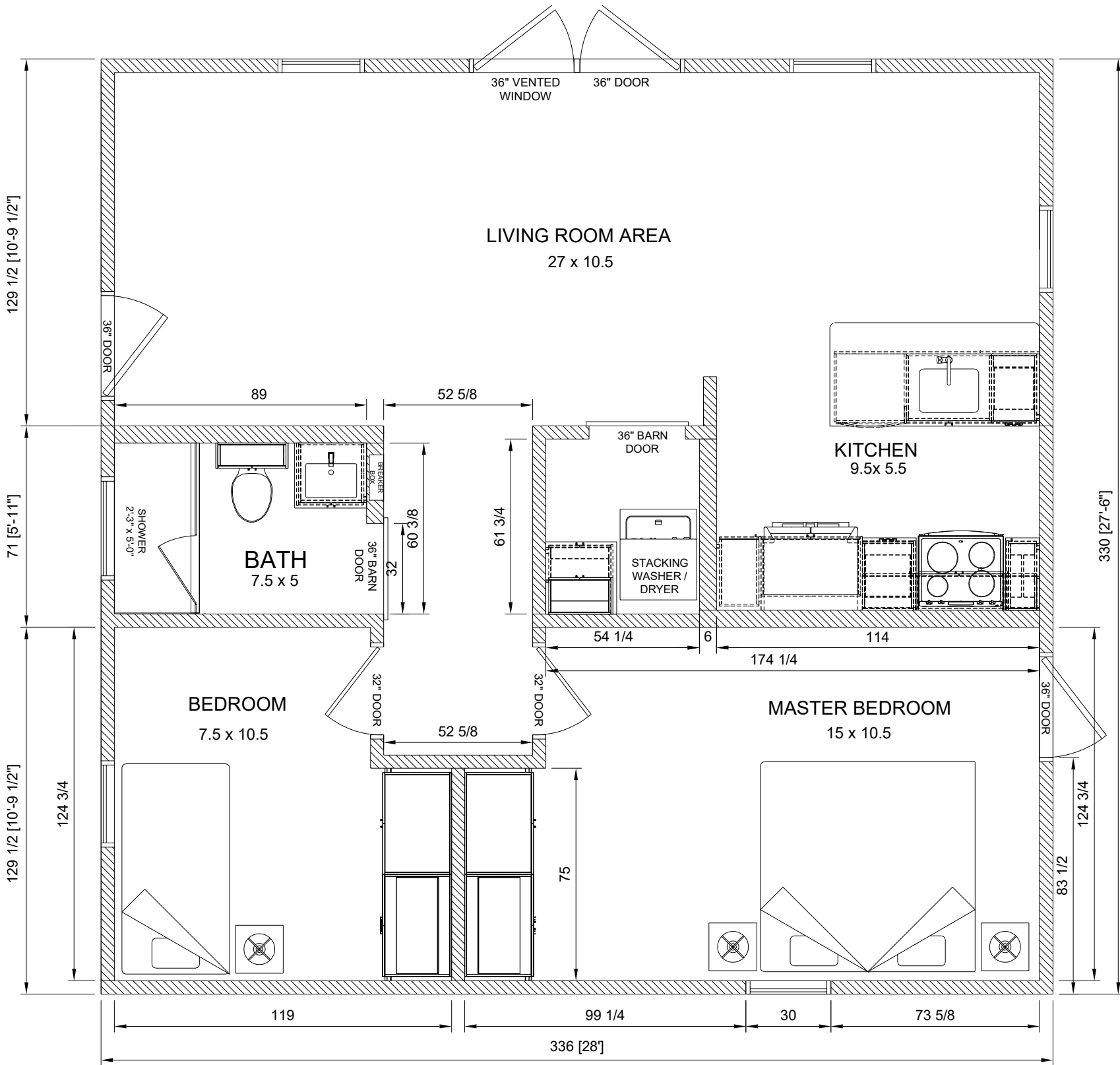
JOB NUMBER : 24-SFP1
DRAWN BY : JB
CHECKED BY : BB
DATE : 14-AUG-2024

NOTES:
1. •



REV:
0

DWG #:
ID.5.0



NOOK FLOOR PLAN

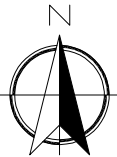


PROJECT:
SEED HOMES PANAMA
HOME MODEL - NOOK

DRAWING: EXTERIOR ELEVATION
SCALE: NTS
DIMENSION SCALE: IMPERIAL

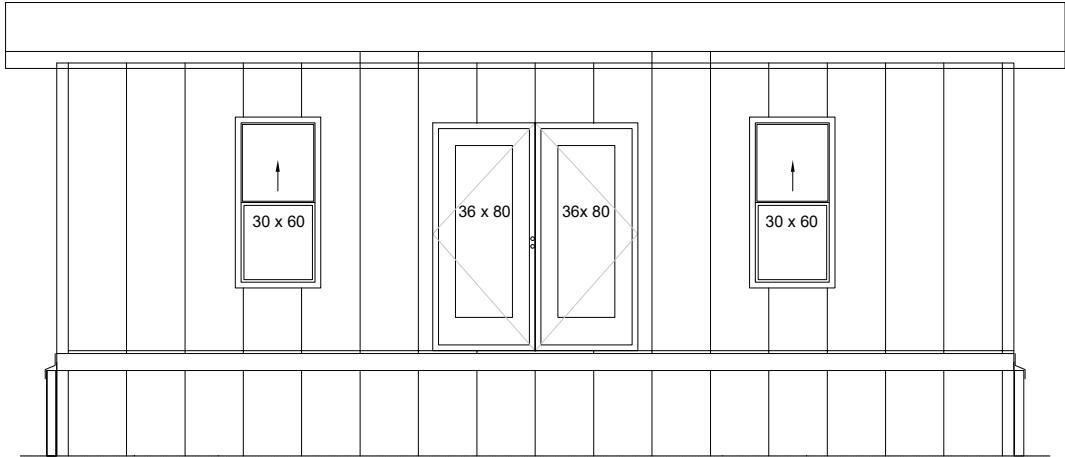
JOB NUMBER : 24-SFP1
DRAWN BY : JB
CHECKED BY : BB
DATE : 14-AUG-2024

NOTES:
1. •

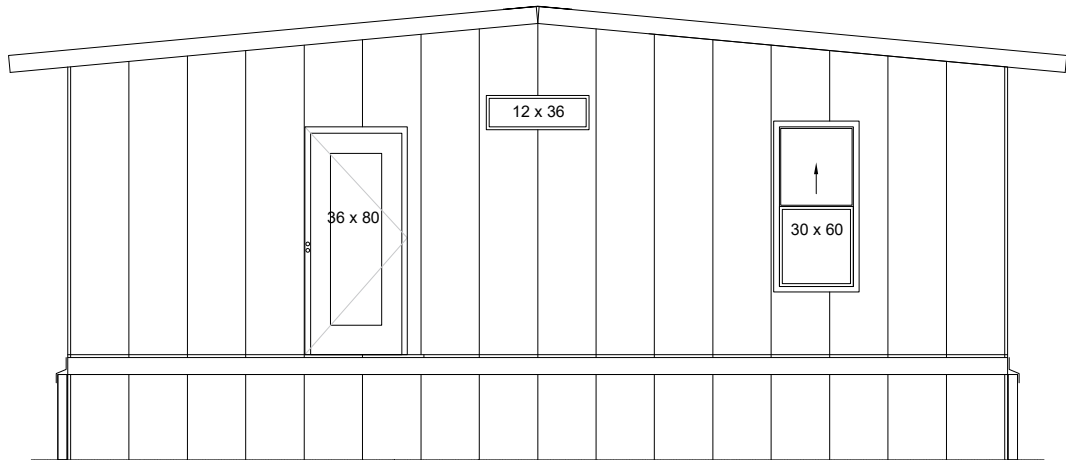


REV:
0

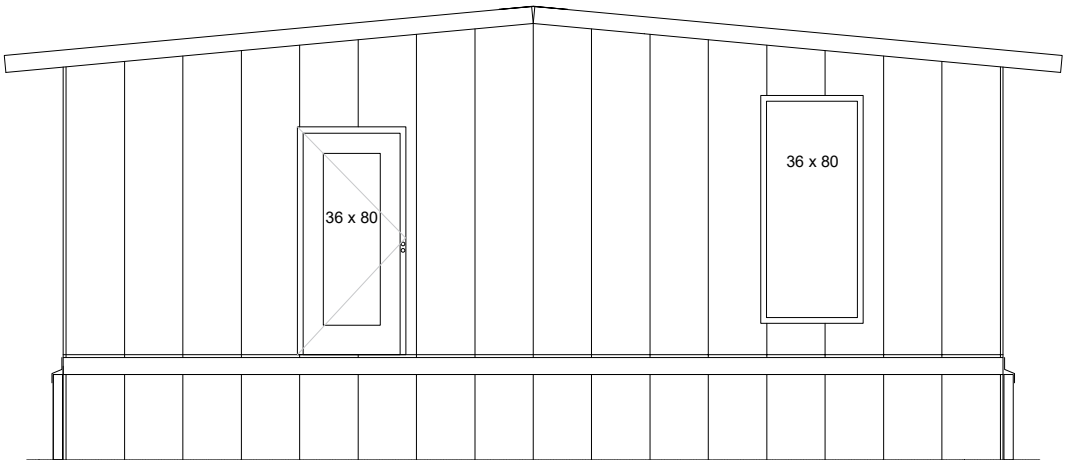
DWG #:
ID.5.1



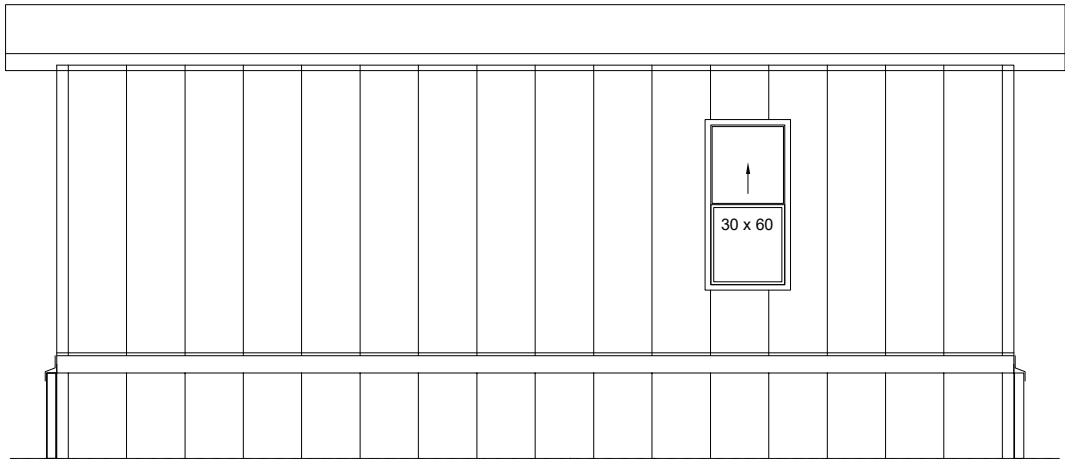
NOOK
NORTH ELEVATION



NOOK
WEST ELEVATION



NOOK
EAST ELEVATION



NOOK
SOUTH ELEVATION




PROJECT:
SEED HOMES PANAMA
HOME MODEL - NOOK

DRAWING: CABINET ELEVATIONS
SCALE: NTS
DIMENSION SCALE: IMPERIAL

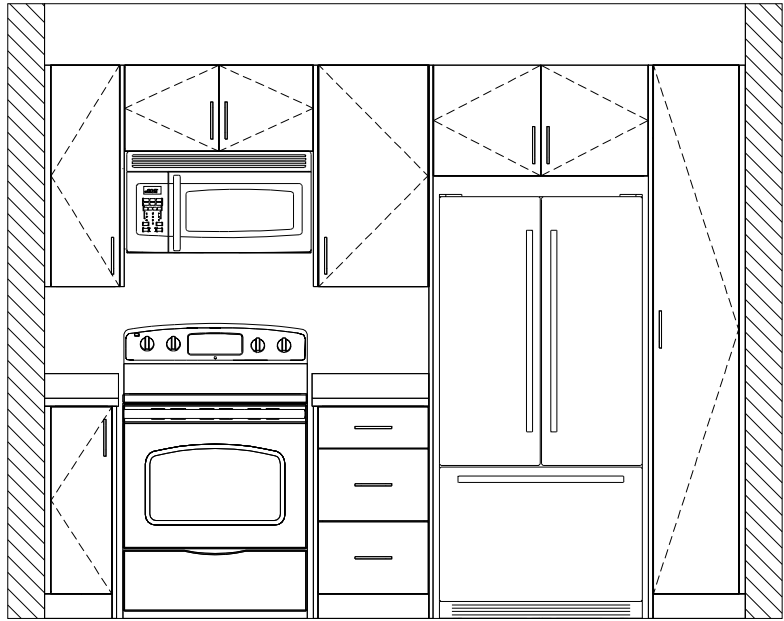
JOB NUMBER : 24-SFP1
DRAWN BY : JB
CHECKED BY : BB
DATE : 14-AUG-2024

NOTES:
1. •

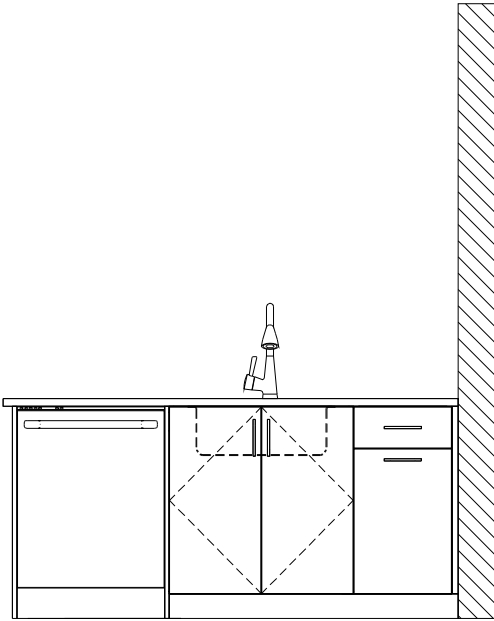


REV:
0

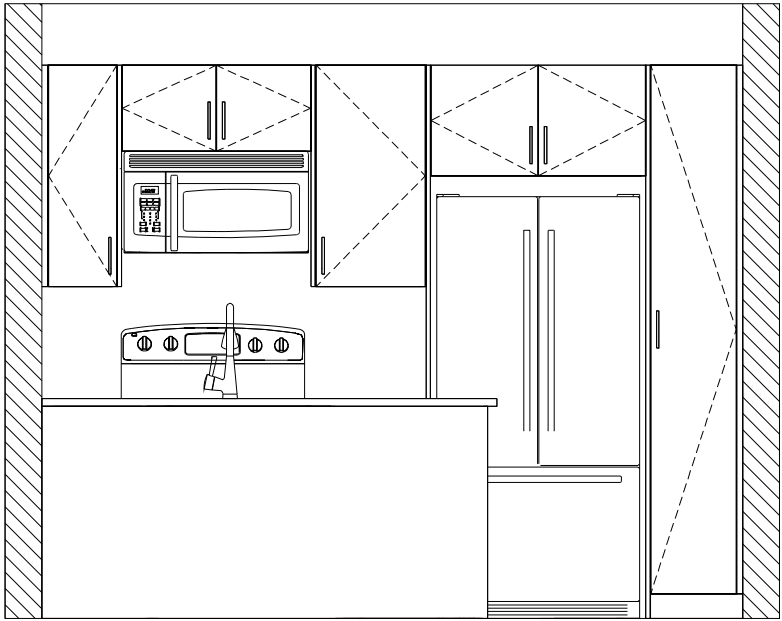
DWG #:
ID.5.2



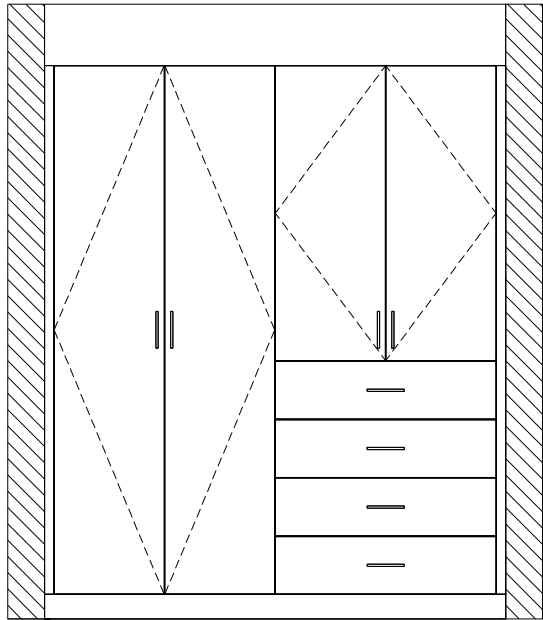
KITCHEN ELEVATION



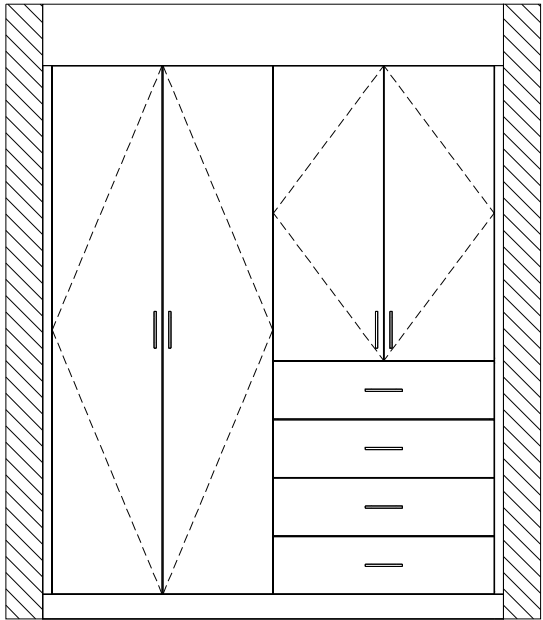
KITCHEN ISLAND ELEVATION



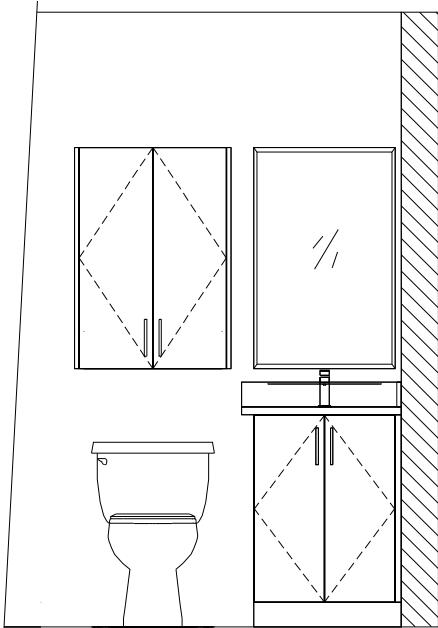
KITCHEN ELEVATION LOOKING INTO THE KITCHEN



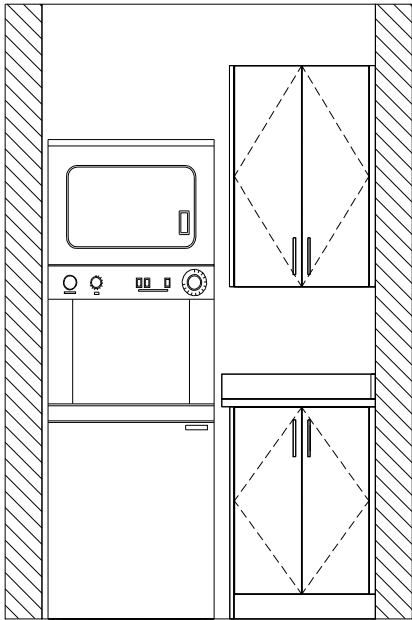
MASTER CLOSET ELEVATION



BEDRM 2 CLOSET ELEVATION



MASTER VANITY ELEVATION



LAUNDRY ROOM ELEVATION